

THE IMPACT OF GIVING

what does that mean?

STEWARDSHIP AND ENDOWMENT FUND

WHAT IS "BENEVOLENCE?"

The Benevolence Leadership Team allocates money from the General Fund to help those in need. How can SOTV provide this help? Because of the financial gifts you have given.

WHAT IS THE "ENDOWMENT FUND?"

The Endowment Fund is made up of monetary gifts given to SOTV (and designated to this fund) that are not spent, but instead are invested and earn interest. Only the interest is spent, ensuring SOTV will impact our community by living out our vision today, tomorrow, and for generations to come.

WHAT IS "STEWARDSHIP?"

Stewardship is what we do with what God's given us (which is everything...) Investing our time, talent, and treasure in SOTV allows us to have a collective impact we may not be able to achieve on our own.



THE IMPACT OF GIVING

what does that mean?

STEWARDSHIP AND THE GENERAL FUND

Did you know...

YOUR GENEROSITY ALLOWED SOTV TO...

provide 203,690 lbs of groceries through the Food Shelf. Donate over 900 winter items to keep our neighbors warm. Provide 600 supply-filled backpacks to neighborhood kids. Donate over 150 news toys and \$10,000 in gift cards for families during the Christmas season.

600 QUILTS!
Our quilters made over 600 quilts in 2022.

60 GROUPS!!
Our staff support over 60 groups at SOTV? From support groups to fellowship groups to learning groups, our staff help with aspects including coordination, communication, and planning.

75+ EVENTS PER WEEK
SOTV hosts an average of 75 events per week. For funerals, group meetings, Wednesday night programming, worship, and more, our facilities staff disinfect, decorate, set up, and tear down.

OVER 30 ORGANIZATIONS

SOTV supports our community near and far by partnering with over 30 organizations and ministry efforts both locally and around the world. \$365,990 was donated in 2022.

67
Students confirmed last year.

47 LEARN CLASSES

Learn classes are offered throughout the year.

VOTED BEST...

Summer camp.
VBS.
Preschool.

780 UNIQUE CHILDREN & YOUTH PARTICIPANTS

In programming including Confirmation, Bible Studies, VBS, Mini Camps, Summer Camp, Service Trips, and Sunday School.

VOTED BEST...

Place of worship.
Choir/music programs.

100 CHILDREN IN CHOIR

In 2022 we added 2 new children's choirs and now we have opportunities for students age 3 through high school.

BILLS

Monthly utilities - \$10,000
Annual snow removal - \$30,000
Annual insurance - \$40,000

\$9,808

Our mortgage is \$9,808 per month. If we continue to pay at the rate we are right now, we will pay our mortgage off by the end of 2031.

17,000

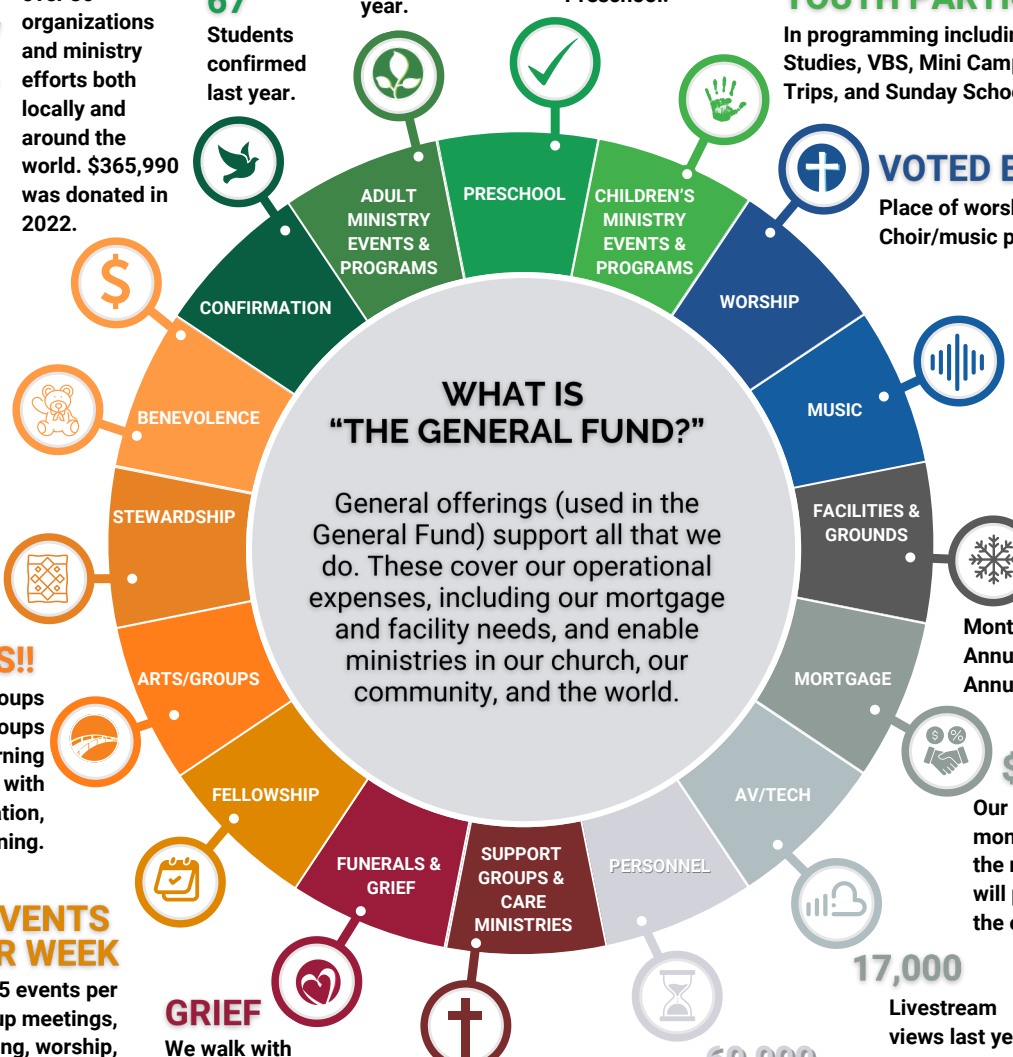
Livestream views last year.

60,000 HOURS!

Staff works 60,000 hours annually supporting the ministries of the church and handling administrative tasks to keep SOTV running smoothly.

WHAT IS "THE GENERAL FUND?"

General offerings (used in the General Fund) support all that we do. These cover our operational expenses, including our mortgage and facility needs, and enable ministries in our church, our community, and the world.



GRIEF

We walk with members for a year after they lose a loved one. They receive a series of books as well as correspondence to help work through their grief.

WE OFFER SUPPORT THROUGH...

Prayer shawls, crosses, homemade cards, and prayer.